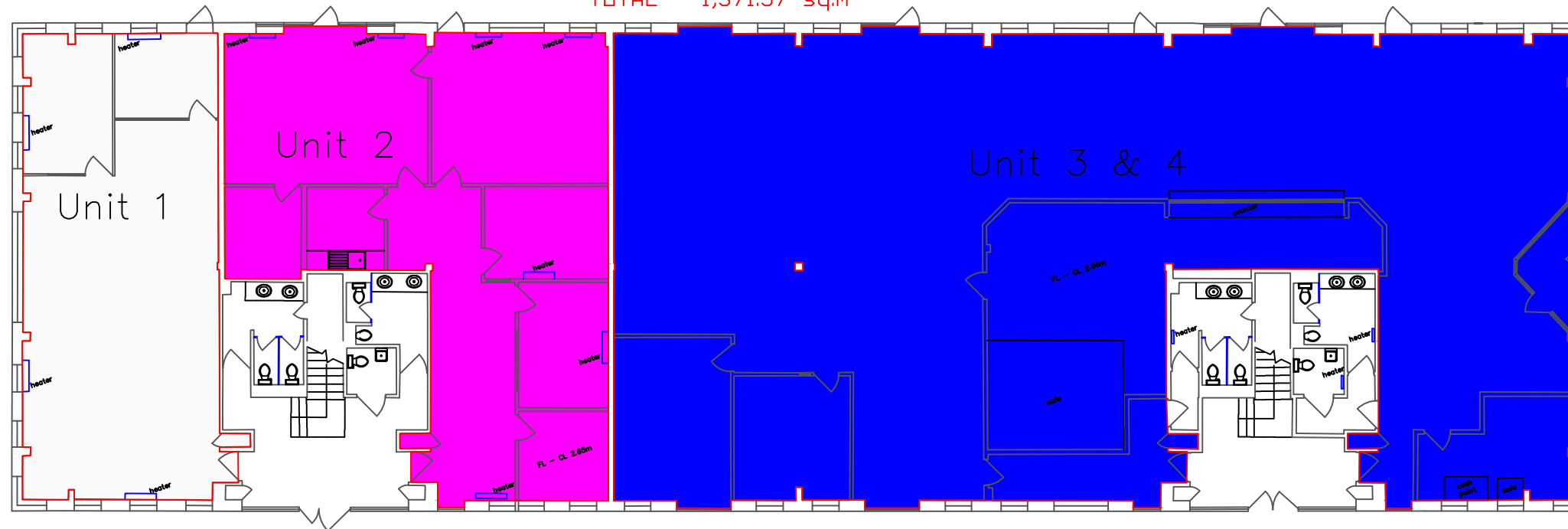


First Floor

NIA as per COMP 6th Edition

- Unit 1 - 95.62 sq.m
- Unit 2 - 139.42 sq.m
- Unit 3 & 4 - 420.78 sq.m. Excl. Col. 0.06sq.m
- Unit 5 - 142.58 sq.m
- Unit 6 - 214.93 sq.m
- Unit 7 - 176.70 sq.m Excl Col. 0.06sq.m
- Unit 8 - 181.54 sq.m

TOTAL - 1,371.57 sq.m



Ground Floor



**James Dunn**  
 Assistant Director: Development, Business & Employment  
 PO Box 457, Wellington Civic Offices  
 Telford, Shropshire, TF2 2FH  
 Tel. 01952 384333  
 Fax. No. 01952 384554  
 Web site. [www.telford.gov.uk/property/](http://www.telford.gov.uk/property/)

TITLE

**Syer House, Stafford Court, Stafford Park**

SCALE

**1:200 @A3**

BY

**ME**

DATE

**27 July 2015**